

Ecu manager Installation and configuration guide.

Requirements.

Web sites.

It's necessary, the workstation that you want use for Ecu manager has to respect the minimum requirements, described in the Maserati Technical Information website:

<http://techinfo.maserati.com/tch/requirements/>

Workstation:

Java

The workstation must be able to use the java technology and in the follow links you can have other information:

- The website of java is <http://www.java.com/it/>

- For the requirements of the workstation you can read the follow page:

http://www.java.com/it/download/win_sysreq-sm.jsp

- The JRE must be install on the workstation. You can follow the instructions that you can find on this page:

https://www.java.com/it/download/help/ie_online_install.xml

-for information about the Java Web Start technology , used to the development of Ecu Manager, you can read the follow link:

http://www.java.com/it/download/faq/java_webstart.xml

From wikipedia:

Java Web Start	In computing , Java Web Start (also known as JavaWS, javaws or JAWS) is a framework developed by Sun Microsystems (now Oracle) that allows users to start application software for the Java Platform directly from the Internet using a web browser . Some key benefits of this technology include seamless version updating for globally distributed applications and greater control of memory allocation to the Java virtual machine . Source: https://en.wikipedia.org/wiki/Java_Web_Start
----------------	--

You can find the instructions to configure your browser in the follow link:

http://www.java.com/it/download/help/enable_browser.xml

Ecu Manager requests a 32 bit java build. The suggested version is Java Version 8 with Update 311, but you can use a version of Java not older than the v: 7.0 .

VCI

The workstation must respect the minimum requirements of the constructor of the VCI. If you want use a VCI ISO 22900 , it must be respect the standards ISO22900/1 and ISO22900/2 described in the follow table.

Document /Name	Description
ISO 22900-1:2008	Road vehicles -- Modular vehicle communication interface (MVCI) -- Part 1: Hardware design requirements
ISO 22900-2:2009	Road vehicles -- Modular vehicle communication interface (MVCI) -- Part 2: Diagnostic protocol data unit application programming interface (D-PDU API)

The workstation must be respect the minimum requirements of the constructor of the VCI. If you want use a VCI SAE J2534, it must be respect the standard SAE J2534/2, described in the follow table:

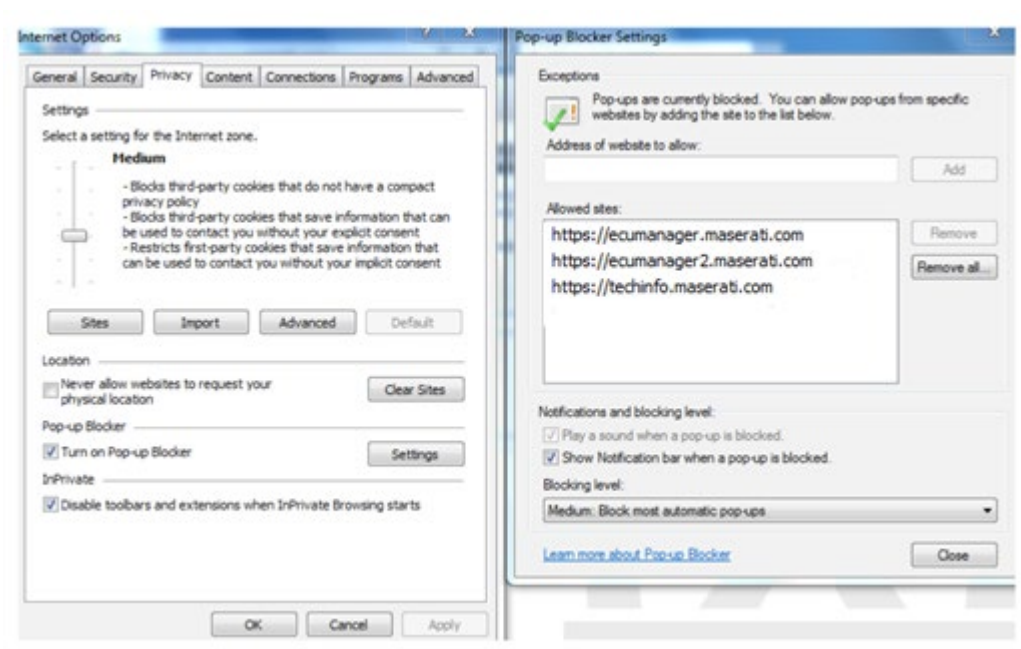
Document / Name	Description
SAE J2534/2: 2006-03-27	SAE J2534-1 defines a standard vehicle network interface that can be used to reprogram emission related control modules. However, there is a need to support vehicles prior to the 2004 model year as well as non-emission related control modules. The SAE J2534-2 document meets these needs by detailing extensions to an SAE J2534-1 interface. Together, these extensions provide the framework for a common interface to protect the software investment of the Vehicle OEMs and Scan Tool manufacturers. Only the optional features will be described by this document. Unless otherwise noted it is expected that these features are added to a fully compliant interface adhering to the December 2004 publication of SAE J2534-1. http://standards.sae.org/j2534/2_200603/

Specific requirements:

Ecu Manager also requires that the VCI manufacturer implements ISO22900 / 2 VCI software with 32bit Architecture (the DLL must be 32bit).

Browser and Java configurations:

To remove the Pop-up blocker open your browser the Internet Options. In the Privacy section , open setting of popup blocker (Turn on pop-up blocker must be always checked).



Insert the follow web site in the form:

<https://ecumanager.maserati.com>

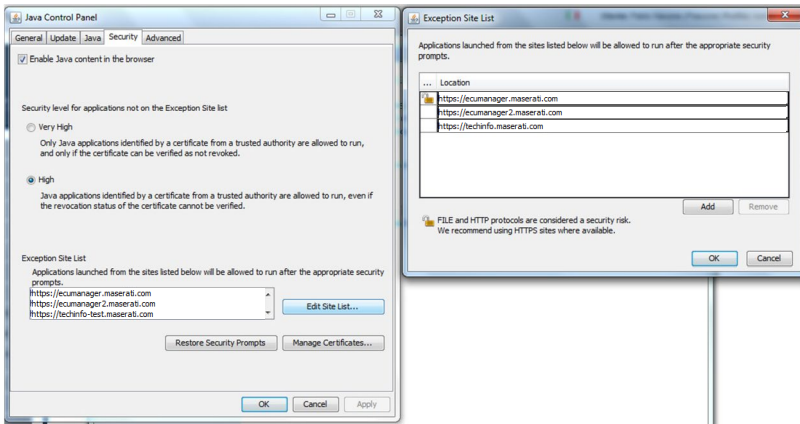
<https://ecumanager2.maserati.com>

<https://techinfo.maserati.com>

You have to do the same configurations in the Java configuration program :

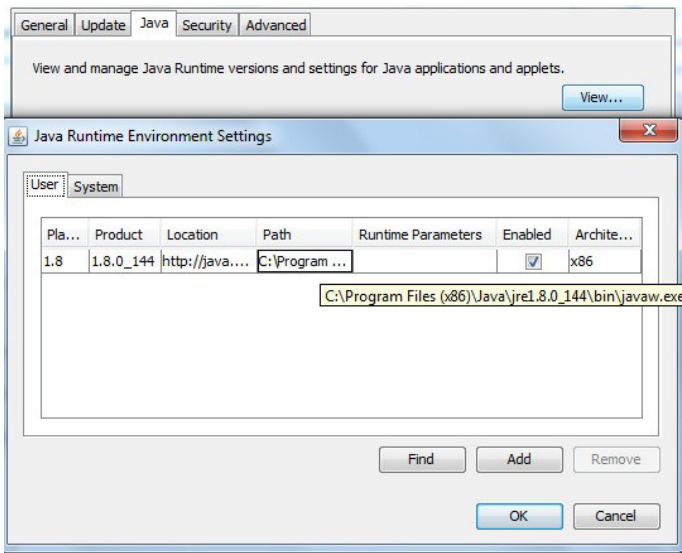
Open Control Panel->Programs and select Java icon.

In the security section, press button Edit Site List and write the two site that I write above.



In the java section verify if the full path of the javaws.exe program is correct. If it's wrong write the correct full path of the Java web start program.

For example C:\Program Files (x86)\Java\jre1.8.0_144\bin\javaws.exe



Restart your browser.

Test the configuration:

From browser open this page: <https://techinfo.maserati.com/>

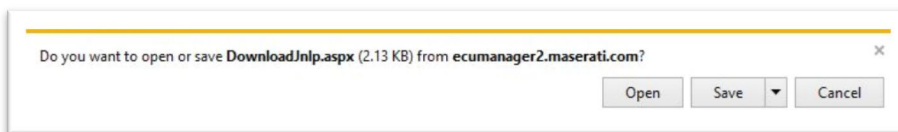
Use your credential to connect to the techinfo

Connect the VCI by USB cable and the VCI at a car.

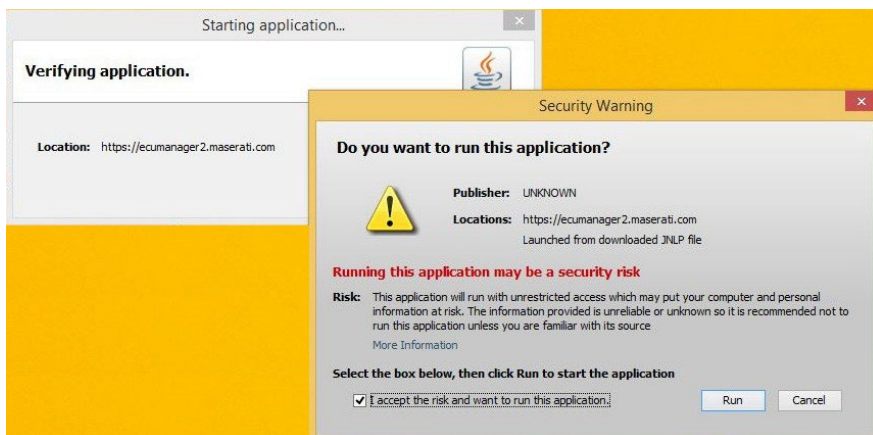
Open “Purchase ECU Packages” and select the model where you are connected.

After that press the “Start the vehicle identification procedure”.

At the bottom of the browser will appear the follow form. Press open:



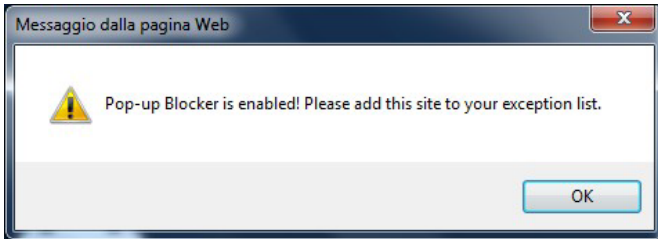
If you cannot open DownloadJnl.aspx , select javaws.exe as program to open this file.



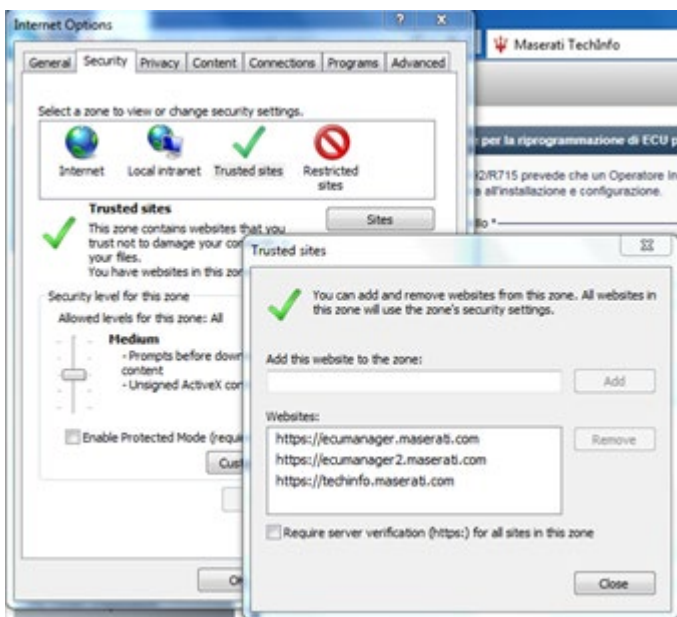
Check “I accept the risk and want to run the application” and press Run. After that you are able to the test.

Problems with pop-up blocker:

If You see the message box under :



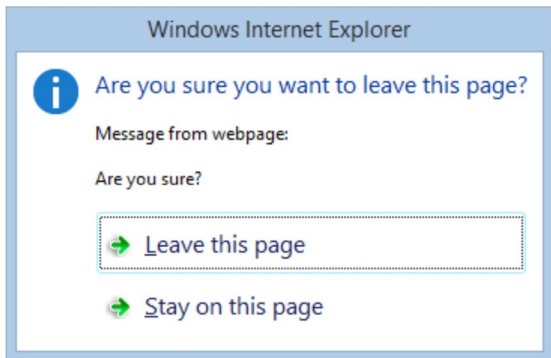
You can resolve in the follow mode: Open Internet Option in your browser and, in the security section , you have to select the trusted sites option: after that select Sites button and insert the sites as you can see above:



Restart your browser.

Application closure

From the follow message box, you can close the JNPL application:



If this message box appear at the end of each operation, press "Leave this page". Otherwise, if it appear during a operation press "Stay on this page".